

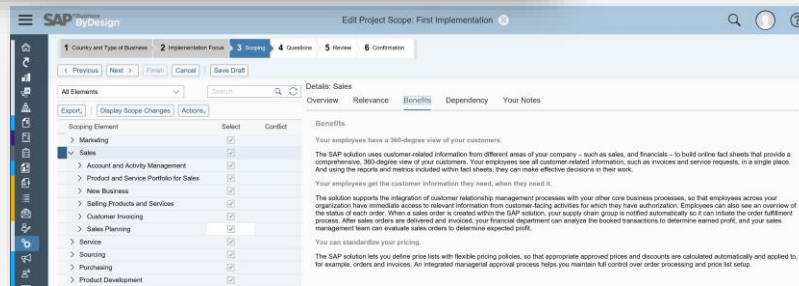
End-to-end business suite for SMBs from SAP Business ByDesign

1. Fast time to value

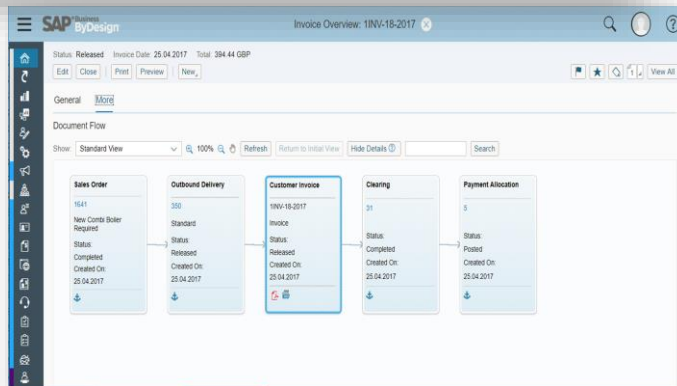
The average small or medium business can implement in 12 weeks leveraging built-in best practices.



1 Visual process configuration tools guide you to implement your business processes on a module by module basis.

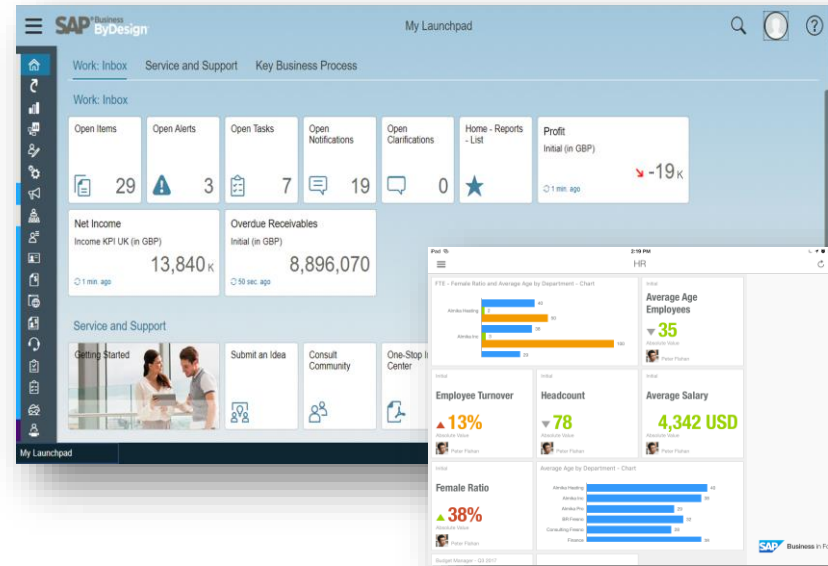


2 Manage your entire business on a single, unified platform. With the document flow feature, management has transparency to know the current status of an invoice, an order, or payment.



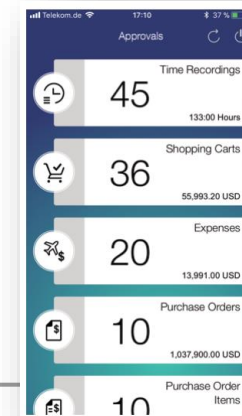
2. Comprehensive business suite

Architected to support your entire business end-to-end. Manage the complete customer journey with SAP's built in best-in-class business processes, such as order-to-cash, procure-to-pay etc.



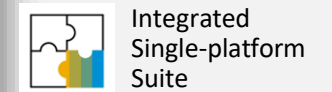
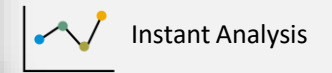
3 The Launchpad or Business in Focus shows a snapshot of key KPIs and report cards on the state of your business.

Information is accessible on the go. Users can approve invoices, contracts, or other workflow items from their mobile devices.



Solution Card Business ByDesign

Powered by Intelligent Cloud ERP



Intelligent Cloud ERP

| | |
|------------------------------|---|
| Integrated finance data | ✓ |
| Embedded real-time analytics | ✓ |
| Global Reach | ✓ |
| Mobile Applications | ✓ |

[Learn more](#)